

D1 Multifunction Rotary Switch

Intuitive Operation

The knob design can be used as a control panel for a single scene, such as controlling the brightness, color temperature and color of lights in different zones. It can also be used as a multi-in-one comprehensive control panel (supporting up to three devices simultaneously for linkage control, such as temperature control, lighting and curtains), increasing the richness and convenience of local control. This eliminates the cumbersome experience of using a mobile phone to control it and makes interaction more intuitive.

Highly customizable

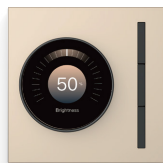
The D1 rotary switch gives direct access to all the important Casambi lighting control functionalities. The preset buttons of D1 rotary switch can be configured via the Casambi App.



COLOR



Phantom gray
AG glass



Starlight gold
AG glass



Mica white
AG glass



Lava white
Art glass



Lava gray
Art glass

TECHNICAL PARAMETER

Product size	86 x 86 x 25.4 mm (The knob is 16mm)
Bottom shell depth	28mm
Package size	100 x 100 x 75 mm
Weight	0.173kg
Gross weight	0.298kg
Installation mode	86 Mounting box depth: >50mm

Input voltage	110~240VAC 50/60Hz
Network mode	Bluetooth Casambi
Material	AG glass
Fire rating	94-v0
Working temperature	-10°C~+60°C
Working humidity	≤95%RH, Non-condensing

Knob interaction, simple and direct

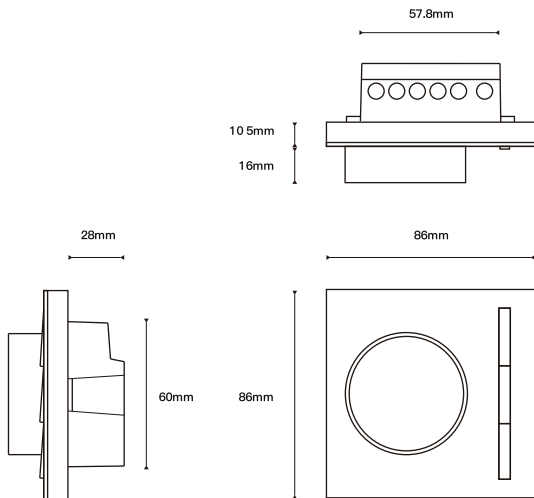


Lighting control

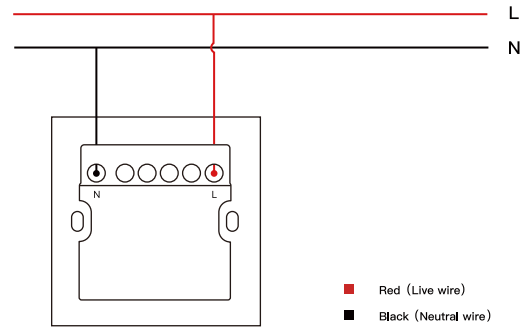


Color temperature adjustment

Size Specification



Wiring Instruction

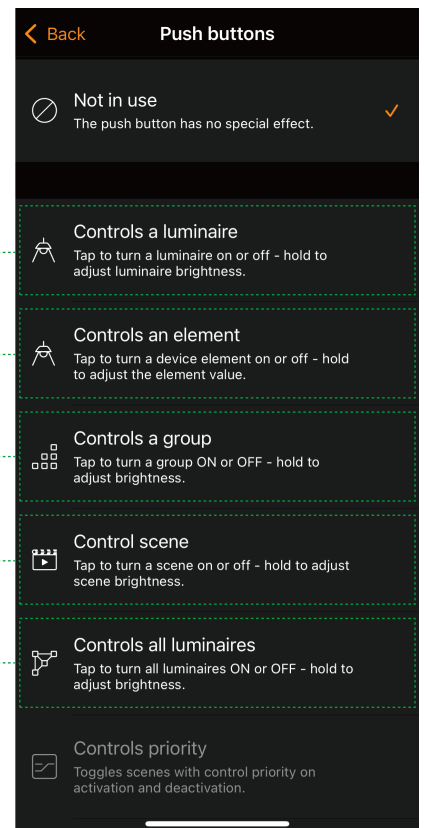
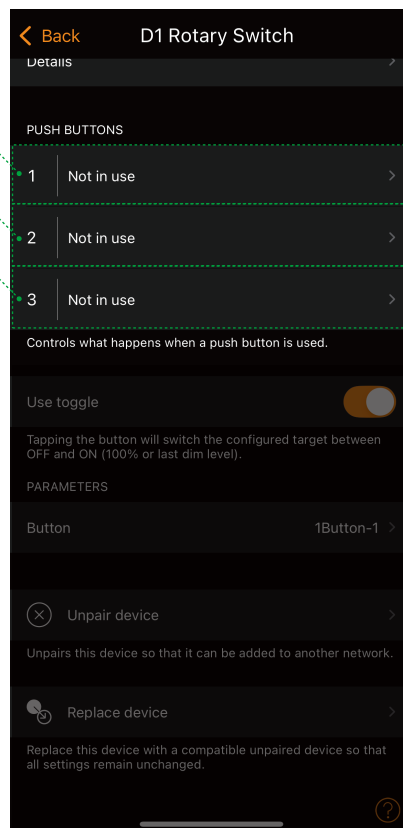
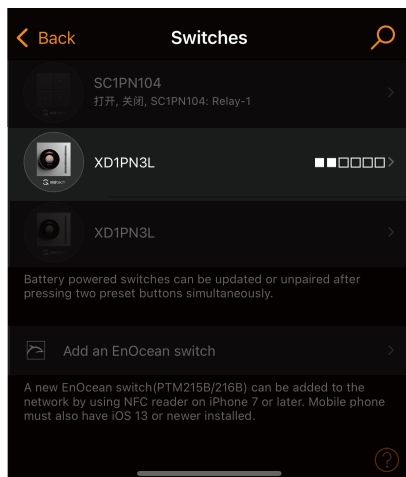
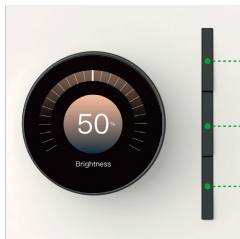


Button Settings Instruction

More – Switches – Devices that need to be edited

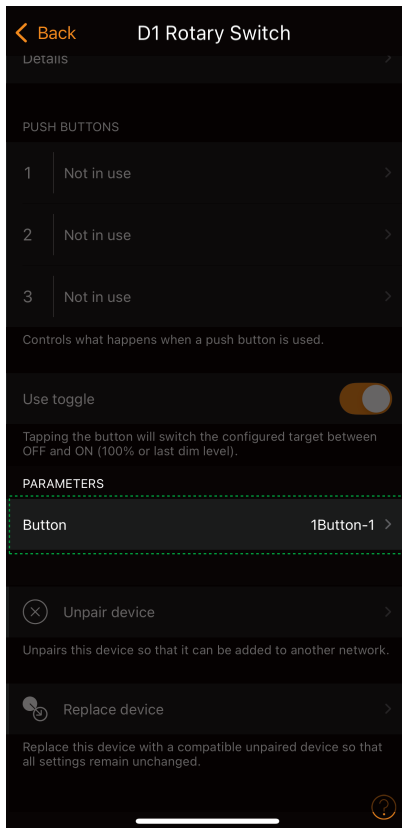
Select the button that needs to be edited.

The button can be bound to the following functions.

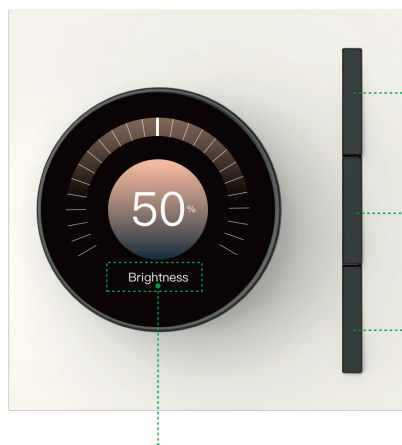
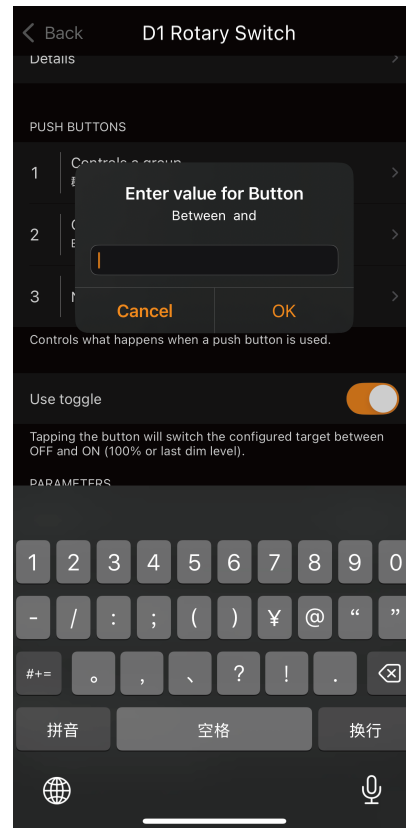


Edit the button name

Select the edit button.



Enter the button name.



Edit the button name

Button Editing Example

- Button1 : 1back home
- Button2 : 2leave home
- Button3 : 3living room

* The first character needs to be set as the key value, and then the name to be edited is entered.

BASIC FUNCTIONS

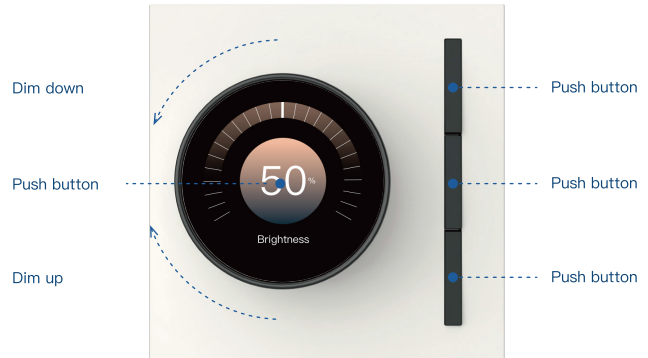
The preset buttons of D1 rotary switch can be configured via the Casambi app. A light indicates the selected preset.

Dim up, Dim down:

- Smooth dimming of bound lamps, groups, and scenes

Preset buttons:

- Individual luminaire control
- Group control
- Control of all luminaires
- Recall scenes
- Recall animations



SMART FUNCTIONS

Dimming

- Turn the knob for dimming:
Smooth dimming of bound lamps, groups, and scenes
- Turn the knob anticlockwise:
Chosen preset goes to 0%
- Turn the knob clockwise:
Chosen preset goes to 100%

Color temperature adjustment

- Press and hold the knob for 2 seconds.
Enter the color temperature adjustment interface. If the bound lighting supports color temperature adjustment, you can control the color temperature of the device through the knob.
- Turn the knob anticlockwise:
The color temperature becomes warmer.
- Turn the knob clockwise:
The color temperature becomes cooler.

Push Buttons

- Press:
The chosen preset (luminaire control, group control, all luminaires, scene recall or animation recall) will turn on
- Press again:
The chosen preset (luminaire control, group control, all luminaires, scene recall or animation recall) will turn off

Turn Off

- Press the Dim down and Dim up button for more than 1 second:
Turns all luminaires off in selected network